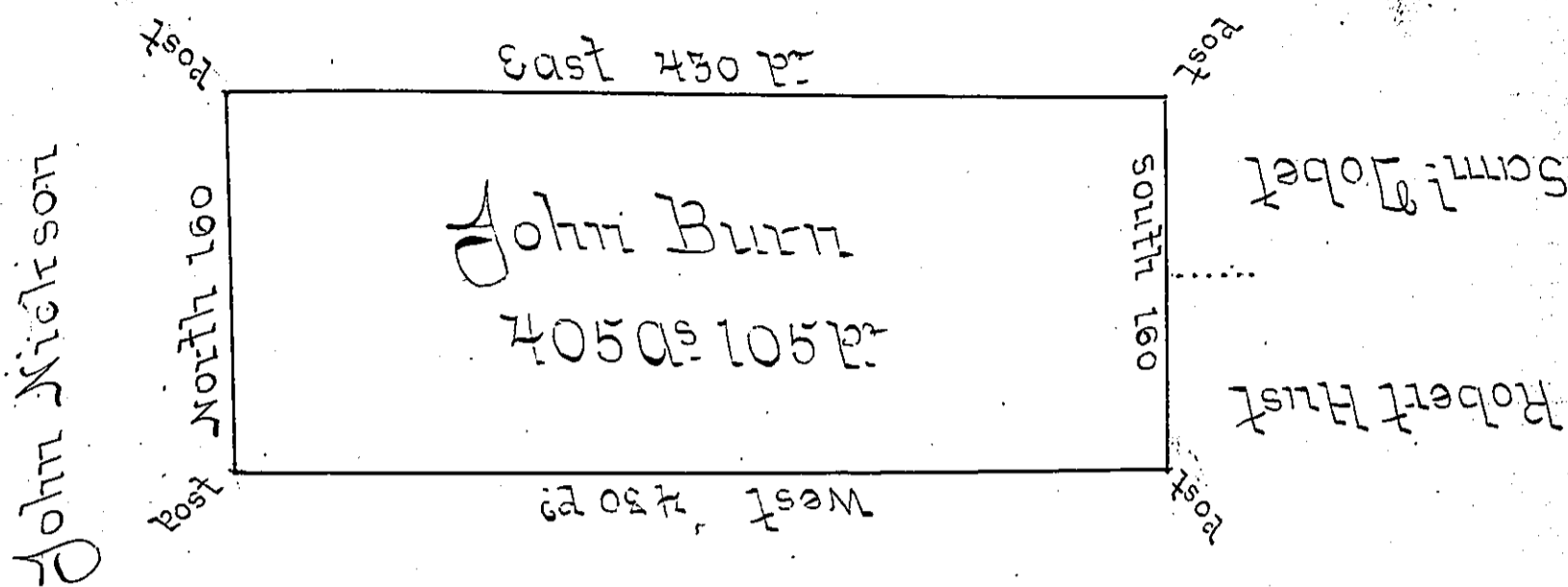


John Mahy



John Burg

Situate on the Waters of Two Lick Creek including some good Springs - in Wheatfield Township Westmoreland County containing 405 Acres & 105 perches & allowance of six per cent for Roads. ~~Was~~ surveyed for John Burn the 17th Day of Nov^r 1797 on Warrant Dated 5th Day of May 1795 -

James Ross D.S.

Daniel Broadhead Esq^r S.S.

IN TESTIMONY that the above is a copy of the original remaining on file in the Department of Internal Affairs of Pennsylvania, made conformably to an Act of Assembly approved the 16th day of February, 1833, I have hereunto set my Hand and caused the Seal of said Department to be affixed at Harrisburg, this fourth day of June 1901.

James W. Latta
 Secretary of Internal Affairs.